

Aircraft Electrical Installer or Technician

2017 Median Pay	\$67,840
2016, number of jobs	
Employment growth forecast, 2016-2026	4%
Entry-level education requirements	High School Diploma & Associates (2 year) degree
2017, workers at the 75th percentile annual wage	
2017, workers at the 25th percentile annual wage	

Note: "Median Pay" = the pay at which 50% of workers are above that value and 50% are below. It's like an average but not quite

Aircraft technicians are responsible for maintaining, testing and repairing the electronics on airplanes. They may have a background in the air force or army, both of which require the completion of basic training, on-the-job training or apprenticeship, and encourage an associate's degree. Aspiring aircraft technicians can also pursue a degree through a trade

Training programs for aircraft electricians vary depending on whether they work in civil or military aviation. The U.S. Army and the U.S. Air Force design training programs according to the type of aircraft or area of avionics that a trainee aircraft electrician will specialize in.



Aerospace Engineers

Aerospace engineers evaluate designs to see that the products meet engineering principles. Aerospace engineers design primarily aircraft, spacecraft, satellites, and missiles. In addition, they create and test prototypes to make sure that they function according to design

2017 Median Pay	\$113,030
2016, number of jobs	69,600
Employment growth forecast, 2016-2026	6%
Entry-level education requirements	Bachelor's degree
2017, workers at the 75th percentile annual wage	\$140,420
2017, workers at the 25th percentile annual wage	\$88,240

Note: "Median Pay" = the pay at which 50% of workers are above that value and 50% are below. It's like an average but not quite



Aerospace Engineering and Operations Technicians

Aerospace engineering and operations technologists and technicians **install, run, and maintain equipment used to develop, test, produce, and sustain aircraft and spacecraft.** Their work is critical to ensuring the safety and precision of key parts of these vehicles and systems.

2017 Median Pay	\$67,240
2016, number of jobs	11,710
Employment growth forecast, 2016-2026	7%
Entry-level education requirements	Associate degree
2017, workers at the 75th percentile annual wage	\$39.29
2017, workers at the 25th percentile annual wage	\$53,910

Note: “Median Pay” = the pay at which 50% of workers are above that value and 50% are below. It’s like an average but not quite



Air Traffic Controllers

These airport professionals work at FAA airport traffic control towers to direct all air traffic and make sure all pilots receive appropriate taxi, takeoff, and landing instructions. It is a fast-paced job during flight takeoff and landing times, and requires strong decision-making skills and sound judgment. Air traffic controllers may work at the terminal or at Air Route Traffic Control Centers (ARTCC). They are responsible for managing all communications with the pilots and providing assistance in the event of an emergency.

2017 Median Pay	\$124,540
2016, number of jobs	22,790
Employment growth forecast, 2016-2026	3%
Entry-level education requirements	Associate degree (2 Year Community College)
2017, workers at the 75th percentile annual wage	\$151,620
2017, workers at the 25th percentile annual wage	\$86,610

Note: “Median Pay” = the pay at which 50% of workers are above that value and 50% are below. It’s like an average but not quite



Aircraft and Avionics Equipment Mechanics and Technicians

2017 Median Pay	\$61,260
2016, number of jobs	131,500
Employment growth forecast, 2016-2026	5%
Entry-level education requirements	Postsecondary non-degree award
2017, workers at the 75th percentile annual wage	\$75,880
2017, workers at the 25th percentile annual wage	\$36,030

Note: "Median Pay" = the pay at which 50% of workers are above that value and 50% are below. It's like an average but not quite



Airline and Commercial Pilots

What Is a Pilot? A pilot is trained to operate aircraft. As part of their duties, they file flight plans, perform maintenance checks and ensure the craft is ready for departure. This includes checking the engine, the navigation equipment and the aircraft's systems to ensure everything is running properly.

2017 Median Pay	\$111,930
2016, number of jobs	34,490
Employment growth forecast, 2016-2026	4%
Entry-level education requirements	Associate degree
2017, workers at the 75th percentile annual wage	\$106,990
2017, workers at the 25th percentile annual wage	\$58,910

Note: "Median Pay" = the pay at which 50% of workers are above that value and 50% are below. It's like an average but not quite



Airport Operations Managers

All major airports function as large-scale businesses and require the leadership of an experienced director or manager. The airport operations manager oversees all aspects of business management, economics, public relations, and personnel management. They may develop and enforce rules and regulations for the property, manage budgets, and train employees.

2020 Mean Pay	\$68,563
2016, number of jobs	
Employment growth forecast, 2016-2026	
Entry-level education requirements	Bachelor's Degree in Airport Management
2017, workers at the 75th percentile annual wage	\$72,140
2017, workers at the 25th percentile annual wage	\$55,364

Note: "Mean Pay" = Average

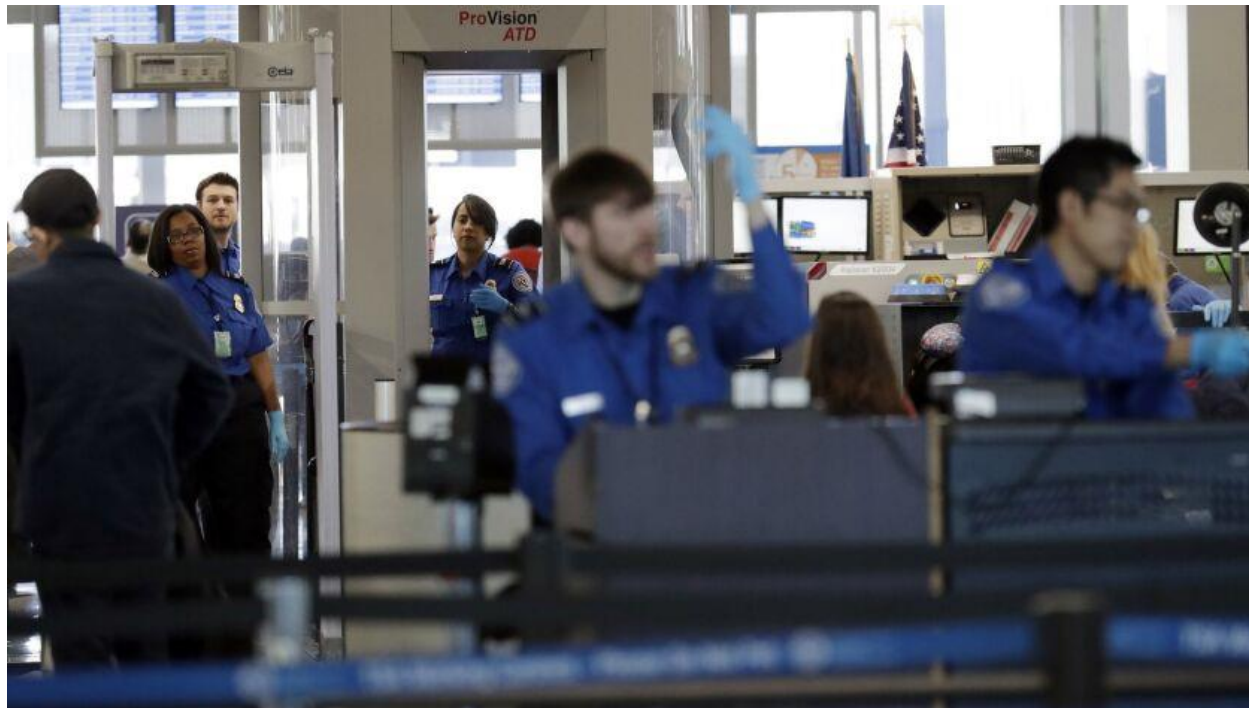


Airport Screeners

Security screeners must screen all passengers and carry-on luggage. They are responsible for passenger safety and detection of potential trouble at security checkpoints located before the boarding gate areas in all airport terminals. ... Assists in conducting screening of passengers, baggage and cargo

2017 Mean Pay	\$48,003
2020, number of jobs	46,850
Employment growth forecast, 2016-2026	
Entry-level education requirements	
2017, workers at the top 90th percentile annual wage	\$105,000
2017, workers at the bottom 10th percentile annual wage	\$21,000

Note: "Mean Pay" = the average



Aviation Maintenance Technician

Always in demand, aviation maintenance technicians are responsible for checking and preparing electric and mechanical components of an aircraft. They must comply with certain standards and perform various safety checks. This is a dynamic career with several options to specialize. Those with military experience already have valuable training that can be applied towards the FAA credits for practical experience for mechanics certification.

2020 Mean Pay	\$73,050
2016, number of jobs	
Employment growth forecast, 2016-2026	
Entry-level education requirements	High school diploma and FAA certification. At least 18 months' work experience for an airframe, power plant, or avionics technicians certificate.
2020, workers at the top 90th percentile annual wage	\$110,000
2017, workers at the bottom 10th percentile annual wage	\$35,000

Note: "Mean Pay" = Average



Flight Attendants

The Flight Attendant is responsible for ensuring the safety, security, and comfort of airline passengers. The Flight Attendant provides customer service while creating a welcoming environment for passengers before, during, and at the conclusion of each flight.

2017 Median Pay	\$50,500
2016, number of jobs	119,000
Employment growth forecast, 2016-2026	10%
Entry-level education requirements	High school diploma or equivalent
2017, workers at the 75th percentile annual wage	\$63,090
2017, workers at the 25th percentile annual wage	\$41,040

Note: “Median Pay” = the pay at which 50% of workers are above that value and 50% are below. It’s like an average but not quite



Quality Control Personnel

Those with a strong attention to detail and an interest in materials and manufacturing can enjoy a career on the factory floor as a quality control specialist. Inspectors, testers, and graders are responsible for checking all parts and materials as they make their way down the assembly line to ensure everything meets safety and quality standards. These professionals may be involved with performing detailed tests, producing reports, and using sophisticated software and tools to perform their tasks with a high degree of accuracy.

2020 Mean Pay	\$42,854
2016, number of jobs	
Employment growth forecast, 2016-2026	
Entry-level education requirements	High school diploma or associates degree
2020, workers at the top 90th percentile annual wage	\$70,500
2020, workers at the lowest 10th percentile annual wage	\$21,000

Note: "Mean Pay" = average

